

Super Narrow Bezel LG Video Wall

▶ **55LV35A-5B**

55" class (54.64" diagonal)

▶ **47LV35A-5B**

47" class (46.96" diagonal)



Display

SUPER NARROW BEZEL

With a bezel-to-bezel measurement of just 4.9mm (47") and 3.5mm (55") our LV35 series video walls create a stunning visual canvas that is easily installed.



55LV35A, 47LV35A

HIGH BRIGHTNESS UNIFORMITY

80% Brightness uniformity ensures that a high-quality image is delivered across all displays.



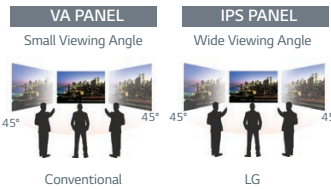
Conventional



LG

WIDE VIEWING ANGLE

IPS accurately displays an image's quality and color at a 178° ultra wide viewing angle.

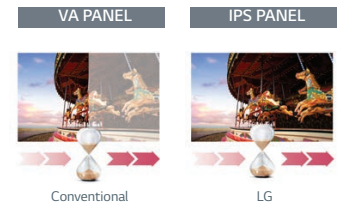


Conventional

LG

IPS HIGH RELIABILITY

LG's IPS Premium Displays present crystal clear images in both landscape and portrait orientations without hot spots until screen surface temperature rises above 230°F.



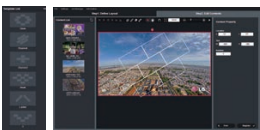
Conventional

LG

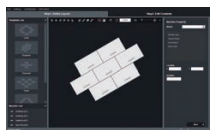
Software

SUPERSIGN

- Video walls are easily configured using included templates
- Rotate, cut and edit content in desired layout
- Content can be scheduled based on time and day
- Ability to distribute content to media players



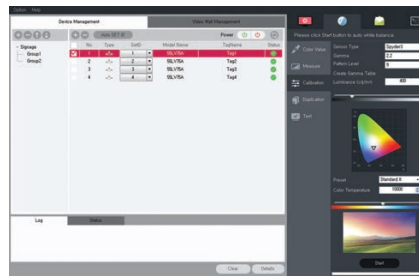
SuperSign V Editor



SuperSign V

SUPERSIGN ADVANCED COLOR ADJUSTMENT

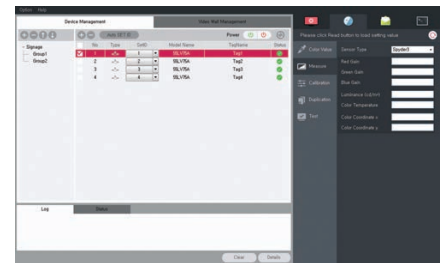
The intuitive GUI in SuperSign C software allows simple measurement and adjustment of display settings instantly. White balancing of a video-wall display is automatic using a sensor.



SuperSign C

REMOTELY MONITOR & CONTROL

Intuitive GUI-based Remote Monitoring & Control via the network and RS232 connection.



SuperSign C

Super Narrow Bezel LG Video Wall

▶ **55LV35A-5B**

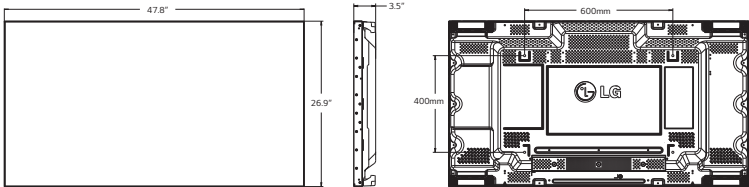
55" class (54.64" diagonal)

▶ **47LV35A-5B**

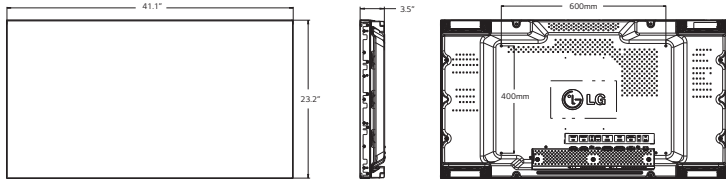
47" class (46.96" diagonal)

Dimensions

55LV35A-5B



47LV35A-5B



Rear Jack Panel



PANEL	Model	55LV35A-5B	47LV35A-5B
	Panel Size	55" class (54.64" diagonal)	47" class (46.96" diagonal)
	Panel Type	IPS	
	Aspect Ratio	16:9	
	Native Resolution	1920 x 1080 (FHD)	
	Brightness	500 cd/m ²	450 cd/m ²
	Contrast Ratio (Typ.)	1,400:1	1,200:1
	Dynamic CR (DCR)	500,000:1	
	Viewing Angle	178°/178°	
	Response Time	12ms (G to G)	12ms (G to G)
	Surface Treatment	Haze 10%	Haze 1%
	Orientation	Portrait & Landscape	
SIGNAL (INPUT)	Digital	DVI-D (1), HDMI (1) with HDCP for all input	
	Analog	RGB (1), Component (RGB Shared), AV (RGB Shared)	
	External Control	RS232C (1), RJ45 (1), IR Receiver (1)	
	USB	USB 2.0 (1)	
SIGNAL (OUTPUT)	Digital	DVI-D (1)	
	External Control	RS232C (1)	

CABINET	Model	55LV35A-5B	47LV35A-5B
		Color	Black
	Bezel Width	2.25mm (left/top) / 1.25mm (right/bottom) 3.2mm (left/top) / 1.7mm (right/bottom)	
	Monitor Dimensions (W x H x D)	47.8" x 26.9" x 3.5"	41.1" x 23.2" x 3.5"
	Weight (head)	50.7 lbs	36.4 lbs
	Carton Dimensions (W x H x D)	53.3" x 33.5" x 8.7"	46.5" x 30.3" x 6.5"
	Packed Weight	66.1 lbs	47.4 lbs
	Handle	Yes	
	VESA™ Standard Mount Interface	600mm x 400mm	
SPECIAL FEATURES	Temperature Sensor	Yes	
	Tile Mode	Yes, Up to 15 x 15 (Natural mode)	
	Source Selection	Digital (HDMI / DVI) / Analog (RGB) / Component / USB	
	Brightness/Contrast/Backlight	Yes	
	Position/Size	Yes	
	Auto Config/Phase	Yes	
	ISM Method	Normal, Color Wash	
	Input Label	Yes	
	Auto Power/Source Memory	Yes	
	DPM Select	Yes (Installation Menu)	
Energy Saving	Yes, Off / Minimum / Medium / Maximum / Screen Off		
Smart Energy Saving	Yes		
ENVIRONMENT CONDITIONS	Operation Temperature	0°C-40°C	
	Operation Humidity	10%-80%	10%-90%
POWER	Power Supply	100-240V~, 50/60Hz	
	Power Type	Built-in Power	
	Power Consumption		
	Normal On (Typ.)	160W	130W
	Power Save/Sleep Mode (Max)	90W	85W
	DPM	0.7W	
	Power Off	0.5W	
STANDARD CERTIFICATIONS	Safety	UL / cUL / CB / TUV / KC	
	EMC	FCC Class "B" / CE / KCC	
	ErP / Energy Star	Yes / Yes(Energy Star 6.0)	
WARRANTY	3-Year Limited Warranty (Parts/Labor/Backlight)		
UPC		7 19192 19537 0	7 19192 19484 7
MEDIA PLAYER COMPATIBILITY	External Media Player Attachable	Yes	
SOFTWARE COMPATIBILITY	SuperSign Elite-w lite	Yes	
	SuperSign Elite-c	Yes*	
ACCESSORIES	Remote Controller, Power cable, DVI Cable, Manual, IR Receiver, RS-232C Cable, Guide Bracket, Screw		

* SuperSign software is available at <http://www.lg.com/us/commercial/video-walls>

